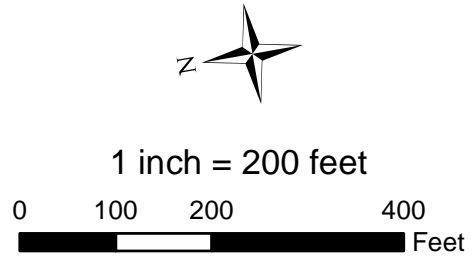


- LEGEND**
- SEACOAST RELIABILITY PROJECT ABOVE-GROUND STRUCTURE
 - MONITORING LOCATION
 - NATIONAL HYDROGRAPHY DATASET STREAM
 - RAILROAD
 - DEPARTMENT OF TRANSPORTATION ROADS
 - APPROXIMATE DRAINAGE COURSE LOCATION
 - APPROXIMATE DRAIN PIPE LOCATION
 - APPROXIMATE LOCATION OF DUCT BANK (NOT TO SCALE - SEE TYPICAL DUCT BANK DETAIL)
 - DELINEATED WETLAND



SEACOAST RELIABILITY PROJECT

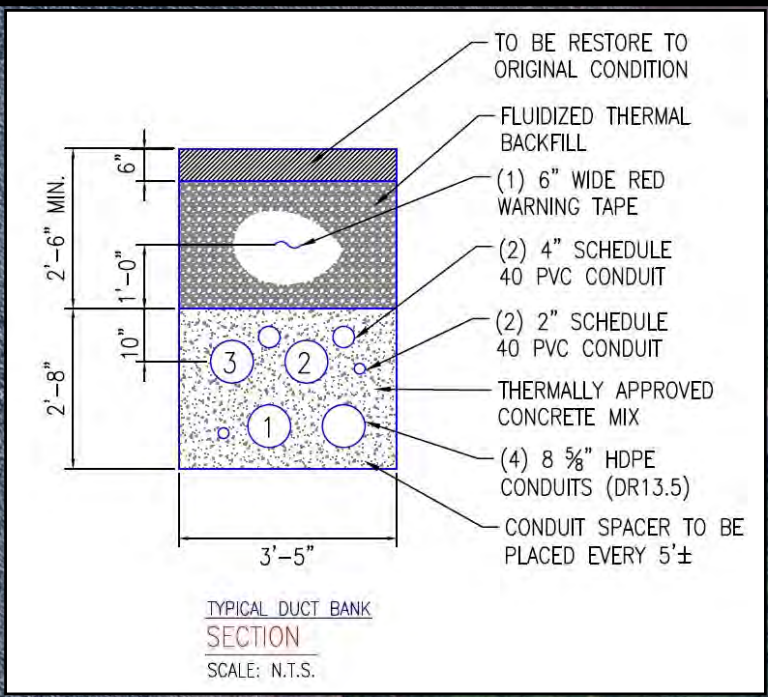
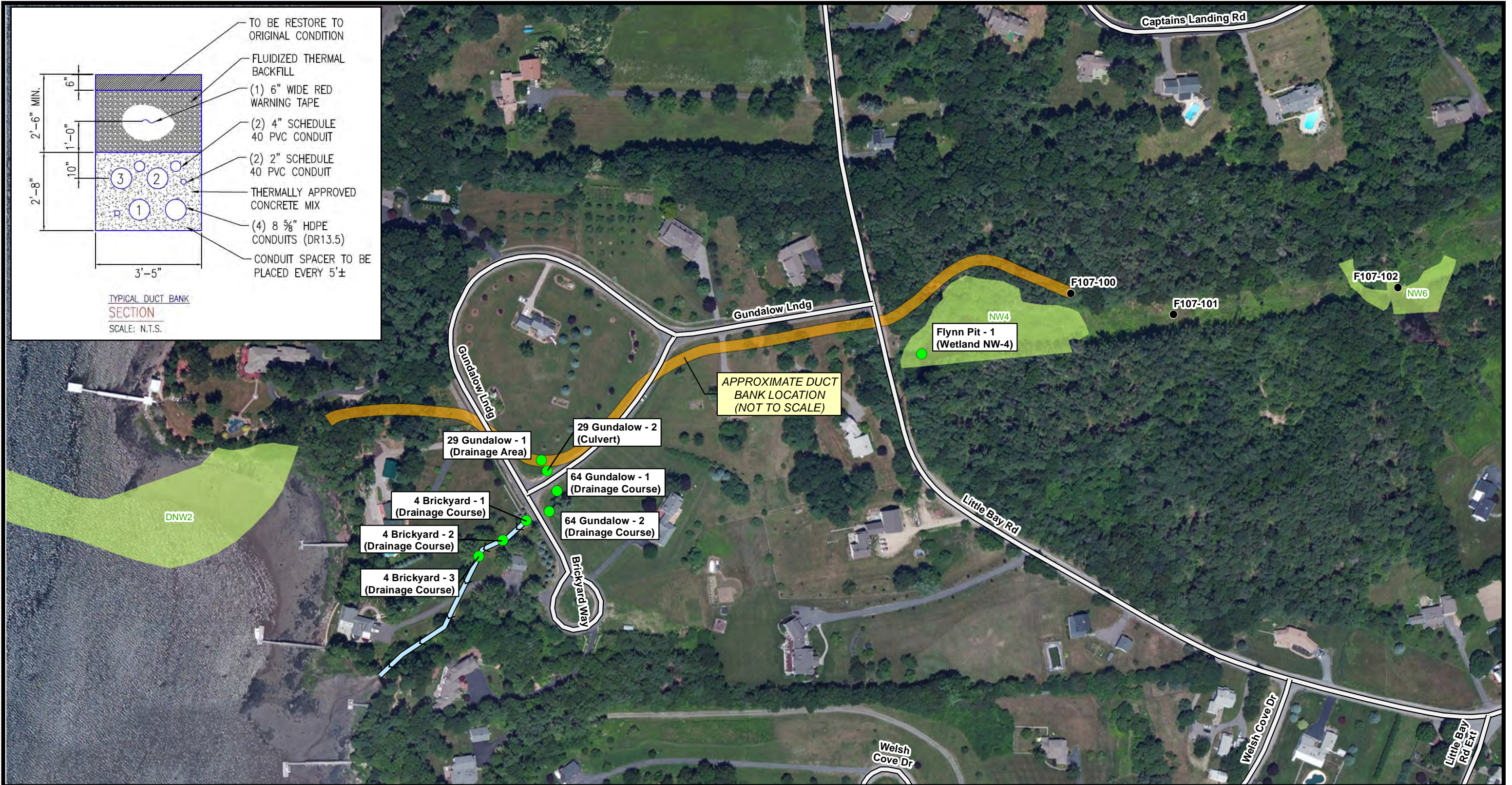
MONITORING LOCATIONS
OCTOBER 30, 2020

DURHAM & NEWINGTON
NEW HAMPSHIRE
FIGURE 1 OF 3

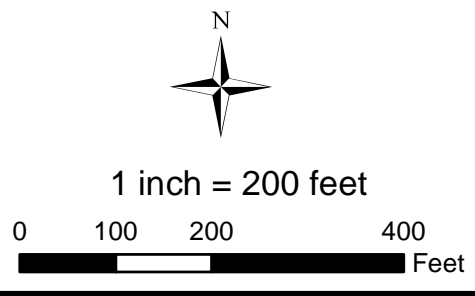
Project No.: 04.0190967.00

EVERSOURCE ENERGY

GZA GeoEnvironmental, Inc.
Engineers and Scientists
www.gza.com



- LEGEND**
- SEACOAST RELIABILITY PROJECT ABOVE-GROUND STRUCTURE
 - MONITORING LOCATION
 - NATIONAL HYDROGRAPHY DATASET STREAM
 - RAILROAD
 - DEPARTMENT OF TRANSPORTATION ROADS
 - APPROXIMATE DRAINAGE COURSE LOCATION
 - APPROXIMATE DRAIN PIPE LOCATION
 - APPROXIMATE LOCATION OF DUCT BANK (NOT TO SCALE - SEE TYPICAL DUCT BANK DETAIL)
 - DELINEATED WETLAND



SEACOAST RELIABILITY PROJECT

MONITORING LOCATIONS
OCTOBER 30, 2020

DURHAM & NEWINGTON
NEW HAMPSHIRE
FIGURE 2 OF 3

Project No.: 04.0190967.00

EVERSOURCE ENERGY

GZA GeoEnvironmental, Inc.
Engineers and Scientists
www.gza.com

